



# icofiss

## Product description

One-component, solvent-based, styrene acrylic bonding primer.

## Uses

- Bonding primer for smooth-surfaced, built-up asphalt roofs that have been specified to receive the ICOPER or UNICO waterproofing membranes.
- Promotes adhesion of ICOPER and UNICO to porous or friable substrates.
- Primes new or existing concrete before applying the MATCH sports flooring line.

## Features / Benefits

- Penetrating and consolidating agent for concrete, timber and silica buildings.
- Bonding primer for water-based waterproofing.

## Surface preparation

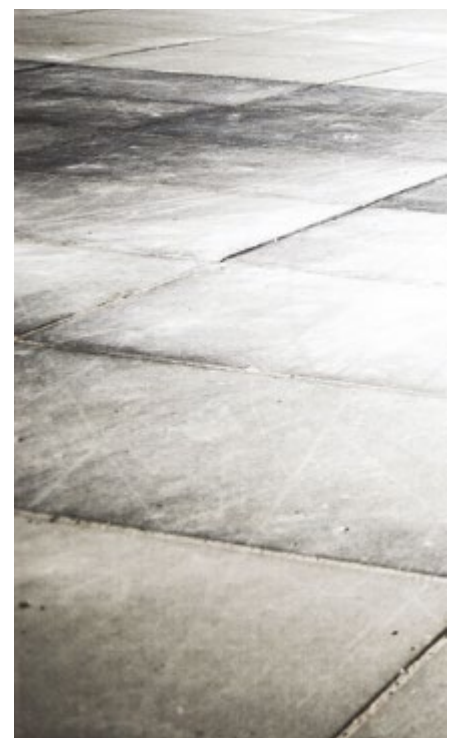
- **Concrete:** clean thoroughly and remove dust, loose material or non-adhering particles, grease, oil, efflorescence and any contaminant that may affect proper adhesion.
- **Built-up asphalt roofs:** remove dust, foreign objects, chipped or flaking paint.
- **Timber:** remove dust, splinters and flaking paint.

## Application instructions

- ICOFISS is ready to use and must not be diluted.
- Apply in one coat by roller or brush.
- **Built-up asphalt roofs:** spread rate 0.1 L/m<sup>2</sup>.
- **Concrete-Timber:** spread rate 0.2 – 0.3 L/m<sup>2</sup> according to substrate absorption.
- Apply the waterproofing membrane within 24 hours. Otherwise, a further coat of ICOFISS is required.
- For best results, apply the waterproofing membrane while ICOFISS is still slightly sticky but safe to walk on.

## Precautions

- Do not apply to damp substrates.
- Avoid product buildup.
- When applying to bitumen rolls, use exclusively a roller or brush.
- Stir before use.
- Avoid applying during the hotter part of the day and to substrates that are excessively exposed to sunlight.
- Apply at temperatures between +5°C and +35°C.
- Do not dilute with water or universal thinners.



PRODUCT FEATURE	MEASURE	UNIT
Type of product	one component	
Density	0.91 (± 0.05)	Kg/Lt
Solid content (weight)	21 (± 2)	%
Full Dry (+23°C, 50% R.H.)	3	hrs
Number of coats	1	
Spread rate	Concrete: 0.200 – 0.300 Bitumen: 0.100	Lt/m <sup>2</sup>
Coverage	Concrete: 3.3 – 5 Bitumen: 10	m <sup>2</sup> /Lt
Ford cup viscosity 4 mm	12	sec
Pull-off test (concrete)	2	MPa
Dilution	ready to use	
Application temperature	+5 / +35	°C
Shelf Life	12	months

## Safety measures

- See SDS.

## Storage

- Store in a dry, well-ventilated place away from heat sources.

## Colors



Clear



Please contact our technical support at:  
[assistenza@icobititalia.com](mailto:assistenza@icobititalia.com)

Ensure that the TDS is up to date: the latest version can be viewed and downloaded at [icobit.com](http://icobit.com)  
The manufacturer reserves the right to amend product specifications without notice. The above performances were measured according to the standards in force at the time of issue and represent the average results of our tests. Although highly reliable, they do not constitute a binding commitment nor liability for Icobit Italia S.r.l. The purchaser and the end consumer acknowledge responsibility for the product suitability to the intended use.



**ICOBIT ITALIA SRL**  
Viale Luca Gaurico 9/11 00143 Roma (Italy)  
C.F e P.I. 12428711001  
[www.icobit.com](http://www.icobit.com) | [info@icobititalia.com](mailto:info@icobititalia.com)

## PACKAGING



## TOOLS



BRUSH



ROLLER



AIRLESS