

# icoforce

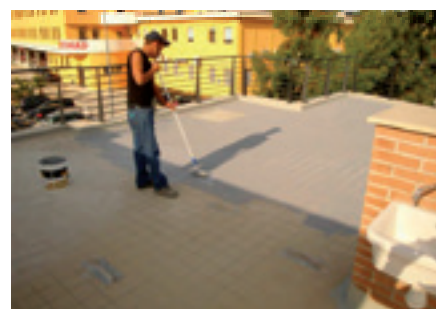


### Product description

One-component, water-based, acrylic bonding primer.

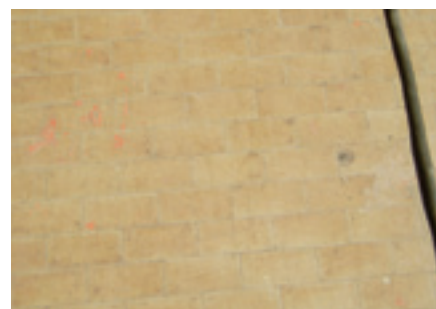
### Uses

- Applied to smooth, non-absorbent substrates (such as ceramic tiles, stoneware, clinker, polished marble, glass), forms a high adhesion textured layer that allows the use of the ICOPER and KEEP DRY waterproofing membranes.
- Promotes adhesion to old plaster, cladding, drywalls and aerated concrete.
- Consolidates friable surfaces prior to plastering.
- Allows tiling over existing tile floors.
- Fills concrete pores.
- Suitable for indoor and outdoor use.



### Features / Benefits

- Enhances anchoring.
- Ready to use.
- Quick application.
- Solvent free.



### Surface preparation

- Clean thoroughly and remove dust, loose material or non-adhering particles, grease, oil, efflorescence and any contaminant that may affect proper adhesion. Remove and replace any loose or missing portions.

### Application instructions

- Concrete: apply diluted with 10% water at a rate of approx. 300 gr/m<sup>2</sup>.
- Non-absorbent substrates (tiles, glass, etc.): use undiluted at a rate of approx. 250 gr/m<sup>2</sup>.
- Apply by roller, pasting brush, squeegee, flat trowel. Avoid excess product, especially in the grout. Tools can be cleaned with water while product is fresh or mechanically once hardened. After complete drying, overlay the surface with the waterproofing membranes of the ICOPER or KEEP DRY lines.



### Precautions

- Apply at temperatures between +5°C and +35°C.
- Do not apply in damp weather or with impending rain, fog, dew.
- Avoid applying during the hotter part of the day and to substrates that are excessively exposed to sunlight.
- Protect from rain until completely dried.
- Do not apply if substrate is moist or subject to rising damp and/or evaporative flows.
- Stir before use.



PRODUCT FEATURE	MEASURE	UNIT
Type of product	one component	
Peso specifico	1.6 ( $\pm 0.05$ )	kg/lt
Solid content (weight)	71 ( $\pm 2\%$ )	%
Touch Dry (+23°C, 50% R.H.)	3	hours
Hard Dry (+23°C, 50% R.H.)	24	hours
Number of coats	1	
Spread rate (on smooth surface)	$\approx 0.25$	kg/m <sup>2</sup>
Spread rate (on concrete)	$\approx 0.3$	kg/m <sup>2</sup>
Adhesion test (on glass)	> 1.5	MPa
Shelf Life	12	months

## Safety measures

- See SDS.

## Storage

- Store in a dry, well-ventilated place at temperatures above freezing.

## Colors



Gray



White



**Please contact our technical support at:**  
[assistenza@icobititalia.com](mailto:assistenza@icobititalia.com)

Ensure that the TDS is up to date: the latest version can be viewed and downloaded at [icobit.com](http://icobit.com). The manufacturer reserves the right to amend product specifications without notice. The above performances were measured according to the standards in force at the time of issue and represent the average results of our tests. Although highly reliable, they do not constitute a binding commitment nor liability for Icobit Italia S.r.l. The purchaser and the end consumer acknowledge responsibility for the product suitability to the intended use.



**ICOBIT ITALIA SRL**  
 Viale Luca Gaurico 9/11 00143 Roma (Italy)  
 C.F e P.I. 12428711001  
[www.icobit.com](http://www.icobit.com) | [info@icobititalia.com](mailto:info@icobititalia.com)

## PACKAGING



## TOOLS



**ROLLER**



**BRUSH**



**TROWEL**