

# icobit<sup>®</sup>

WATERPROOFING SYSTEMS

*Washout resistant, ready-to-use, cold applied,  
seamless waterproofing membrane*



Max  
20°  
Min  
1°

**30'**  
minuti

## Rapid

Impermeabile in mezz'ora  
Waterproof in half an hour

# icoper<sup>®</sup>

rapid





RESEARCH CENTER  
- BRAZIL -



CONVENTION SITE  
- ITALY -



HOTEL  
- SPAIN -



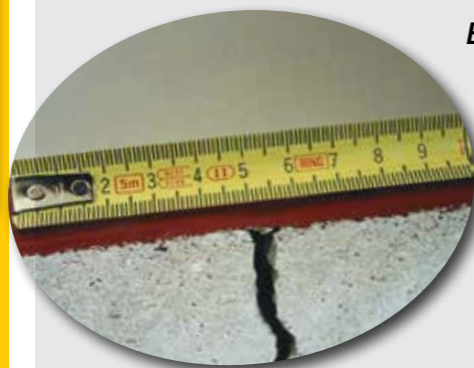
MOSQUE  
- SYRIA -

- USE -

Waterproofing of flat and sloped roofs, fiber cement boards, asphalt, bitumen felts, tiles, metal surfaces, foundation and retaining walls, concrete slabs, terraces, balconies, facades, chimney stacks, gutters, eaves, sheds, PU-foam insulated roofs

# icoper<sup>®</sup>rapid

- PERFORMANCES -



- Ready to use, one component.
- Resistant to ponding water on flat roofs.
- UV resistant (no need for protective paints).
- Eco friendly, safe, free from solvents and other harmful substances.
- Walkable for ordinary maintenance.
- Quick filming at low temperatures.
- Resistant to impending rain, moist and dew.
- Seamless.
- Elastic.
- Able to conform to irregularly shaped substrates.
- Quick, safe and easy to apply.

# icoper<sup>®</sup>rapid

- APPLICATION INSTRUCTIONS -

Apply to fully cured substrates, as moist and subsequent outgassing may result in blistering or delamination. Wait for the primer to dry (see "Surface Preparation"). Apply minimum two coats, for a total spread rate of no less than 2 kg/sq.mt. Reinforce with **icoarm** non-woven fabric where the product is subject to mechanical strain. Apply consecutive coats in contrasting colors in order to easily check the correct spread rate. Apply at temperatures between +1°C and +20°C. Tools can be cleaned with water while the product is wet.

- SURFACE PREPARATION -

Clean thoroughly and remove dust, loose material or non-adhering particles, grease, oil, formwork release agents, residue from other treatments and anything that may affect proper adhesion. The support must be dry. Allow complete drying after water blasting. Seal floor-wall transitions, control and isolation joints with **icojoint MS** sealant cartridge. Expansion joints must be treated separately.

### Concrete slabs and roofs

Smooth out possible unfinished or hollow areas and repair damaged portions. Prime with **icoper rapid** (general purpose version) diluted with ½ liter of water per kg. Coverage of the mixture: approx. 5 sq.mt.



### Bitumen felts

Clean thoroughly and remove peeled-off protective paints. Restore degraded parts. Prime smooth felts with **icofiss** applied by brush or roller to dry surface. Spread rate: 100 gr/sq.mt. Prime slated or sanded bitumen felts like concrete above.

### Metal Surfaces

Clean thoroughly and remove peeled-off protective paints. Seal the seams preemptively. Apply a rust converter if needed. Prime with **icopox PM 102** anti-corrosion coating.



### Wooden surfaces

Clean thoroughly and remove delaminated woodchips. Make sure the surface is sound and dimensionally stable. Prime with **icofiss**. The coverage depends on the absorption rate.

REMARKS

- Avoid applying to damp supports and lightweight screeds, or in case of negative thrust.
- Do not apply to substrates that may bleed oil. Wait for new bituminous surfaces to fully cure and weather.
- Wait for new concrete to fully cure.
- Do not apply to supports with underlying concealed waterproofing. In such cases, please contact our Technical Division.
- Add vapor vents when needed.
- Avoid applying thick layers in one coat.
- Possible residual stickiness can be removed by sprinkling talc or cement.
- Although weatherproof, it is however advisable to protect from rain until touch dry.



STATE MINISTRY  
- CUBA -



FOOD FACTORY  
- ITALY -



BEACH CLUB  
- ITALY -



DOMES  
- IRAN -

# TECHNICAL DATA

PRODUCT FEATURES	MEASURING UNIT	VALUE
Density	g/ml	1.39
Solid content	%	75
Water vapor permeability	μ	2820
Watertightness *		Pass
Washout Resistance **	min	≥ 30
Touch Dry time ***	hrs	1.5
Curing time ***	hrs	24
Number of coats		min. 2
Coverage per coat	Kg/sq.mt.	1.0
Dry film thickness (2 kg/sq.mt.)	mm	1.1 (± 1%)
Tensile strength	MPa	0.8
Tensile elongation	%	100
Cold Flexibility	°C	- 20
Shelf life	months	12

\* Tested internally in accordance with EOTA TR-003

\*\* Measured at +1°C and 85% R.H. with a spread rate of 1 kg/sq.mt.

\*\*\* Measured at +23°C (±3°C) with a spread rate of 1 kg/sq.mt.

## STORAGE

- Store in a covered, dry area.
- Keep containers tightly closed.
- Do not expose to temperatures below freezing or exceeding +50°C



## Packaging



5 • 20 Kg

## Colors



RED • GREY

## Application Methods



Roller



Brush



Airless Spray

TDS icoper rapid 1015

The manufacturer reserves the right to amend the product specifications without notice.  
The above performances were measured according to the standards in force at the time of issue and represent the average results of our tests.  
Although highly reliable, they do not constitute a binding commitment nor liability for Icobit Italia S.r.l.  
The purchaser and the end consumer acknowledge responsibility for the product suitability to the intended use.